

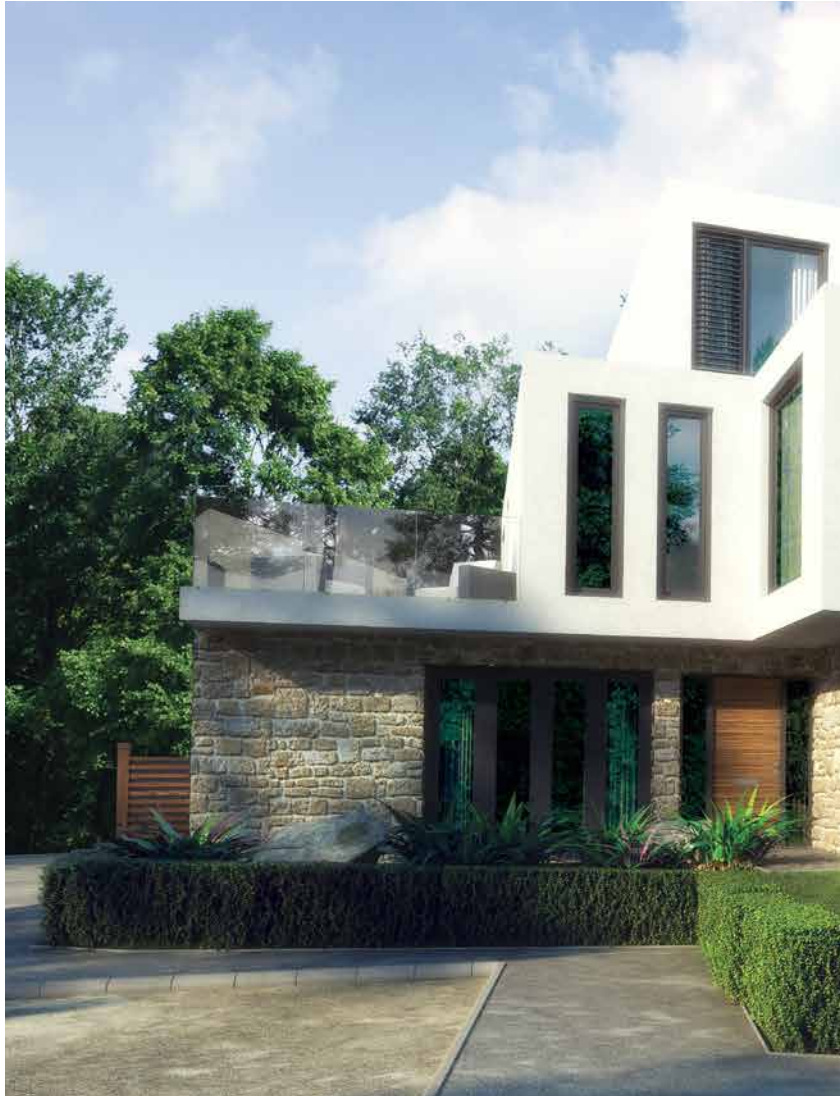


HYDROS & OYSTER

DAYLESFORD CLOSE | WHITECLIFF



THE NEW DEVELOPMENT



AN EXQUISITE DEVELOPMENT OF TWO VISUALLY STUNNING LUXURY HOUSES, WITH A STRONG EMPHASIS ON DESIGN AND QUALITY. HYDROS AND OYSTER SET NEW STANDARDS OF INNOVATION, DESIGN AND SPACE PLANNING.





LIFESTYLE & LOCATION

LOCATED IN THE HIGHLY DESIRABLE WHITECLIFF AREA, THE DEVELOPMENT IS A STONE'S THROW FROM THE PARK, WITH ITS WATERFRONT CYCLE PATH LEADING TO POOLE QUAY AND NEARBY PARKSTONE BAY MARINA. IN CLOSE PROXIMITY ARE A WEALTH OF EXCELLENT SCHOOLS AND AMENITIES IN NEARBY CENTRES LILLIPUT AND ASHLEY CROSS.

Hydros and Oyster are located approximately one mile from the renowned Sandbanks, famous for its cosmopolitan lifestyle and spectacular beaches. It features the perfect blend of sweeping golden sand and shallow bays and is located at the mouth of Poole Harbour, one of the largest natural harbours in the world. Its calm waters offer a sanctuary for wildlife, a haven for sailing and adrenaline fuelled water sports. The area has a growing gastronomic reputation with several nationally acclaimed restaurants close by. It also boasts the cultural hub The Lighthouse Theatre and boutique shops. There are also excellent transport links close by.

No matter what the time of year there is a wealth of entertainment and events to be enjoyed, from the Poole Harbour Boat Show in the summer to Bournemouth Arts by the Sea Festival in autumn and the Snowdrops at Kingston Lacy in the winter.







LOCAL AREA





ON YOUR DOORSTEP

THE DEVELOPMENT 
Hydros & Oyster

TRANSPORT

Parkstone Train Station 1.3 M
Poole Train Station 3.4 M
Swanage Ferry 3.7 M



SCHOOLS

Lilliput C of E 1.2 M
Bournemouth Collegiate 1.5 M
Courthill Infant School 1.7 M



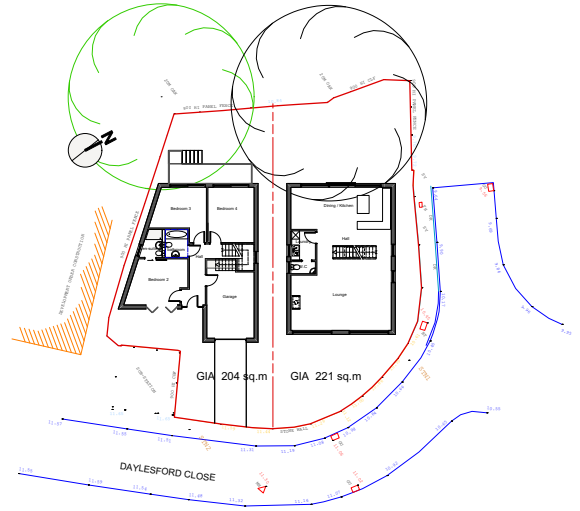
AMENITIES

Parkstone 0.7M
Liliput 0.9 M
Poole 2.2 M



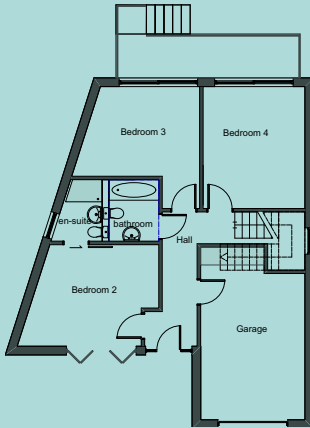


FLOOR PLANS

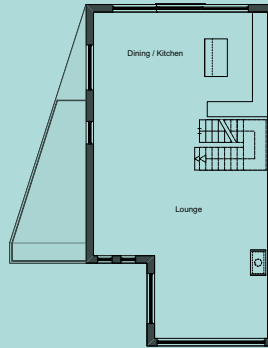


OYSTER

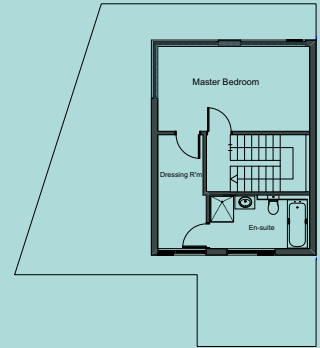
- Lounge: 6.9 x 4.2m
- Dining/Kitchen: 4.2 x 3.4m
- Master Bedroom: 5.3 x 2.9m
- Bedroom 2: 4.2 x 3.4m
- Bedroom 3: 4.3 x 4.1m
- Bedroom 4: 3.5 x 4.1m
- Garage: 3.6 x 5.9m
- Overall: 204 sqm



GROUND FLOOR



FIRST FLOOR

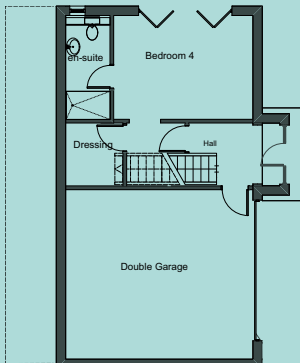


SECOND FLOOR

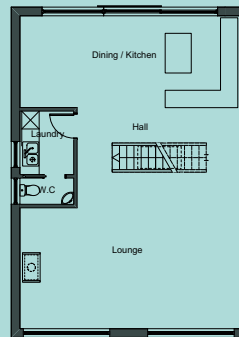


HYDROS

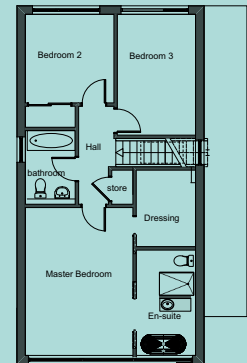
- Lounge: 7.6 x 4.2m
- Dining/Kitchen: 7.6 x 3.2m
- Master Bedroom: 3.8 x 5.2m
- Bedroom 2: 3.1 x 3.1m
- Bedroom 3: 2.8 x 4.2m
- Bedroom 4: 4.4 x 3.3m
- Double Garage: 6.0 x 5.5m
- Overall: 221 sqm



LOWER GROUND FLOOR



GROUND FLOOR



FIRST FLOOR



STYLE & FINISH

KITCHENS

- Handleless doors with soft close
- Corian worktops
- Custom built kitchen
- Integrated Smeg appliances including: oven, combination oven & induction hob
- Designer boiling water tap

BATHROOMS

- High quality sanitaryware and fittings, Crosswater, Burgbad and Vitra
- Large format porcelain tiling
- Feature lighting

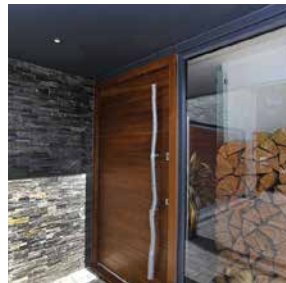
BEDROOMS

- Fully fitted dressing rooms to master suites
- Luxurious fitted carpet to all bedrooms

MISCELLANEOUS

- Internal design in a contemporary style
- Underfloor heating throughout
- Large format tiling flooring to hall and kitchen
- Engineered timber flooring to living rooms
- Walnut over high doors with satin nickel ironmongery
- Modern wooden staircase with glazed balustrade
- 100% LED energy saving lighting
- Feature ceilings with integrated lighting
- Electrical automation system with audio-visual and lighting control
- Full fire sprinkler systems







STEPHEN NOBLE | 01202 557 766
BOURNEMOUTH-PROPERTY.CO.UK

frost & co
ESTATE AGENTS

FROST & CO | 01202 778 855
FROSTANDCO-UK.CO.UK

juno
developments

JUNO DEVELOPMENTS | 01202 767 767
JUNODEV.COM

Please note – floor plans and dimensions in this brochure are taken from architectural drawings and are for guidance only.
Images and CGIs are for indicative purposes only. Please ask your Sales Advisor for specific details.